

Commercial spaces



Made in France

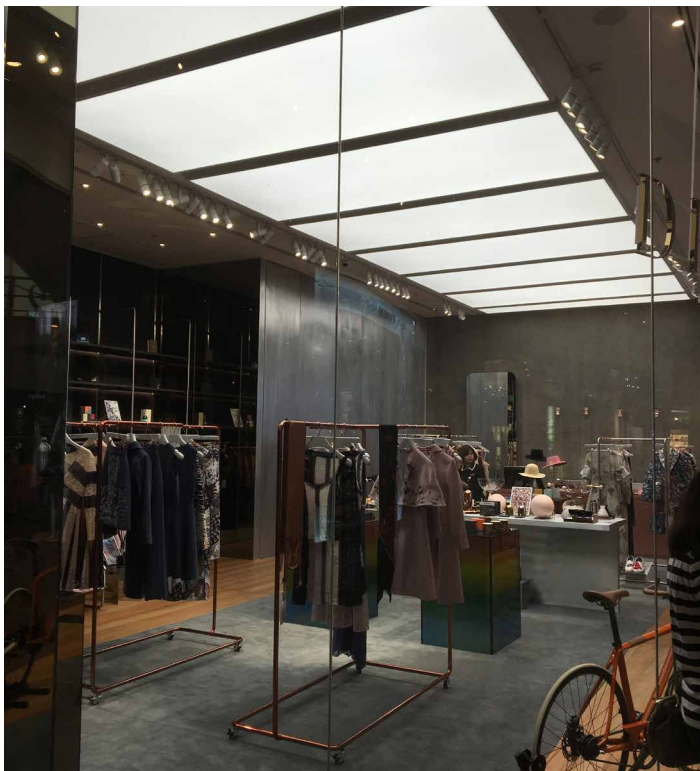
CLIPSO[®]
so different



Armageddon, Akropolis Shopping Centre - Vilnius - Lithuania

Translucent backlit ceilings - Architect: Performa Architectural Studio - Distribution, installation : JSC Tonas & JSC Swiss System

The 5 key arguments...



Shop - THAILAND

Backlit boxes

Installation: Chingchai & Sons Engineering Co.,Ltd (CCSE)

...for the advantages of CLIPSO®
for walls and ceilings in
commercial spaces:

1. Visibility
2. Wide covers
3. Special offer
4. Speed and cleanliness
5. Lighting



Shopping Mall AZRAIL Group - Israel
 XXL Acoustic Frames with Light Path Integration - Architect:
 Avner Sher architects - Installation: ART COVER



Shopping Centre - South Korea
 White acoustic ceiling - Installation: EFAS



Shop - BELGIUM
 Printed wall - Installation: MonaVisa

CLIPSO® EXPERIENCE

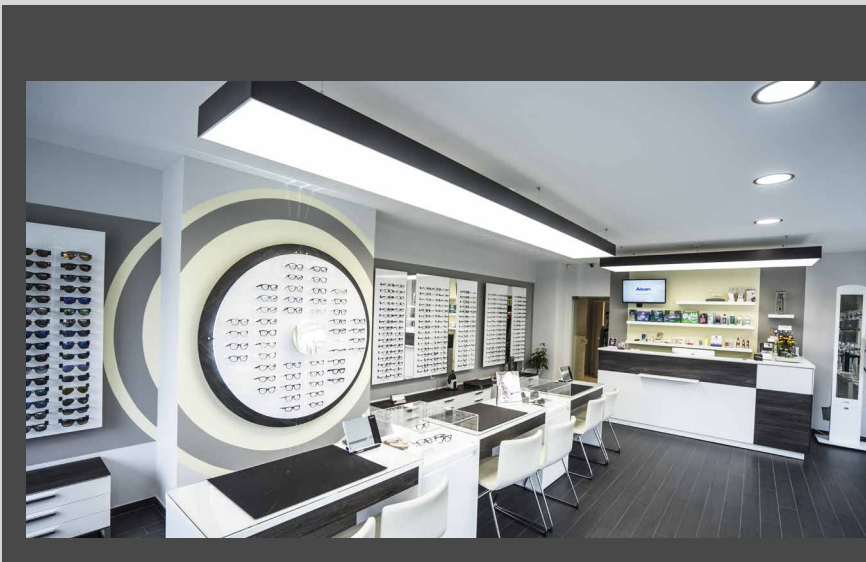
"CLIPSO® covered partitions were the perfect answer to the specifications that a company sent me. The perfect combination of visuals and layout.

The printed fabric clipped to frames can be changed with the brand's collections, as so can the removable partitions that divide the different spaces.
 The parent company liked the concept so much that I was asked to deploy it in all its shops worldwide."

Shop - Germany
 Fixed curved cabinet. 140 mm thick. Printed covering.



Sales area - FRANCE
 XXL acoustic frame with light integration and hood
 Installation: KALLISTE

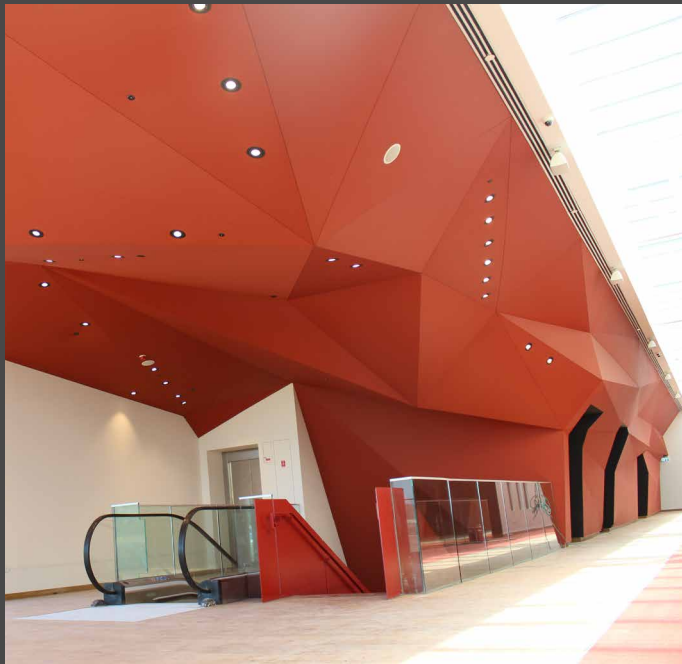


"An optician's shop wanted a change of look". In such a setting, the arrangement and choice of colours are very important.

The closure during the work involved a shortfall that the owner had anticipated. We were therefore keen to meet the deadline. The rapid installation of the CLIPSO® covering and the back-lighting system made it possible to illuminate the space, which is essential for the activity of the shop. And all this in a very short time. We made someone very happy! "

Optical shop - LUXEMBOURG
 White ceiling and backlit frames Baumann
 Spanndecken GmbH

CLIPSO® EXPERIENCE



"The shopping centre, called a cathedral because of its impressive volumes, was a real architectural challenge.

Fortunately, CLIPSO® wide covers not only created a unique specific environment through a play of colours depending on the floor, but also softened the acoustics.

My mission as an architect was to combine aesthetics and technology while "covering" the lighting and fire systems of "this city within the city".

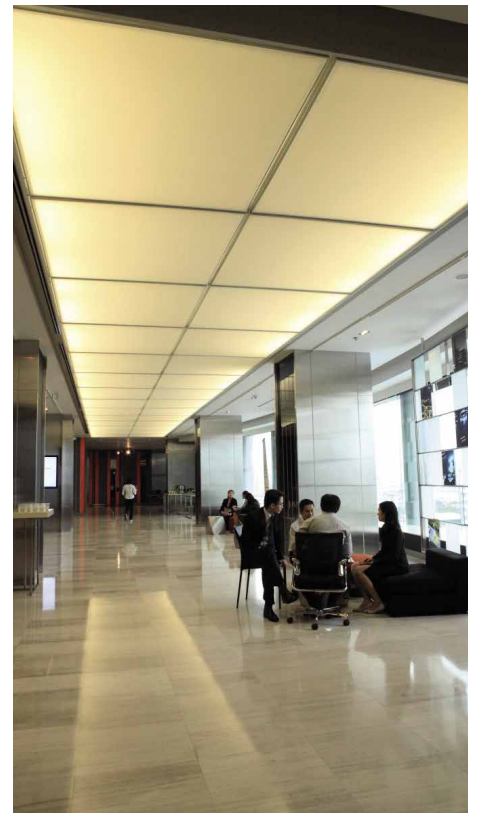
"Globus Max" Shopping Mall - ISRAEL
"Terracotta"-colour 3D effect acoustic ceiling Art Cover



Ready-to-Wear Store - PORTUGAL Printed backlit partition
Production: L2 Spirit



Shop - Germany
Fixed curved cabinet. 140 mm thick.
Printed covering.



Commercial Space - THAILAND
Backlit frames
Installation: Chingchai & Sons Engineering Co.,Ltd (CCSE)



CLIPSO®

so different

clipso.com

Hauptbüro: 5 rue de l'Eglise • F-68800 VIEUX-THANN • Tél. : +33 (0)3 89 37 10 84 • E-mail : contact@clipso.com

